

*Thinking of you*

 **Electrolux**

**Electrolux Professional**  
Washer Extractors





Let us help  
you experience  
the Electrolux  
laundry world

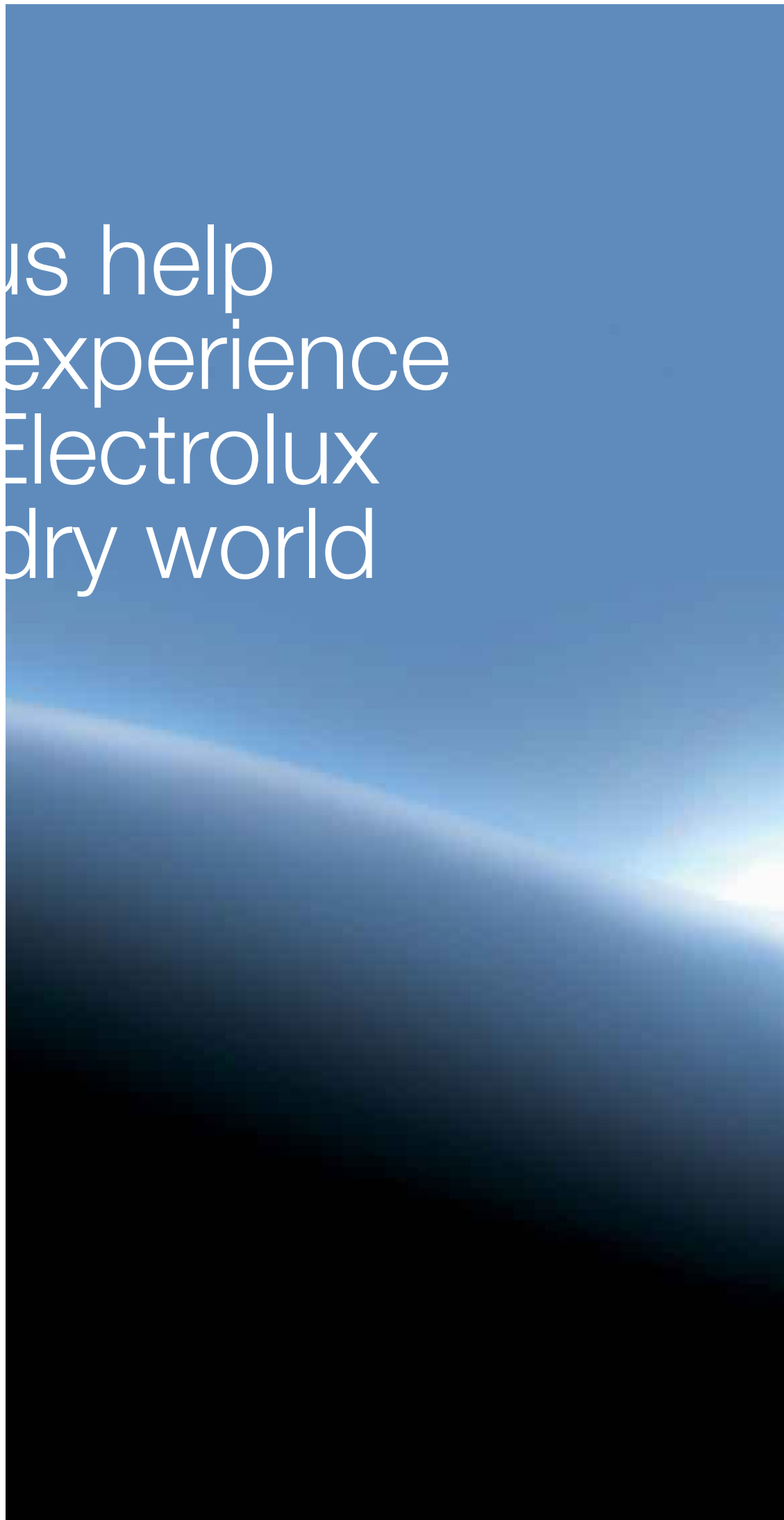


p  
ience  
olux  
orld

Follow the **wave**.



us help  
experience  
Electrolux  
dry world





A woman with blonde hair, wearing a light-colored blazer over a white shirt, is seated in the back of a car. She is looking out the window with a thoughtful expression, her hand resting near her chin. The car's interior features wood paneling and a control panel with buttons and a cup holder. A laptop is visible in the foreground.

# Care and excellence

Excellence is part of our philosophy:  
in planning, technology, design and service.



# Smart solutions just for you

Every laundry is different. That is why we have created such an extensive range of products to ensure that you can choose the machine that means your needs.



## Hospitality

Pristine linen and the highest standard of hygiene make all the difference to your customers satisfaction.



## Healthcare

The most demanding hygiene standards in nursing homes and childcare centres are met with Electrolux washers.



## Laundrettes

Perfect results wash after wash with energy-efficient, low-maintenance machines.



## Apartment House Laundries

Ultra-low noise emissions and easy-to-use machines with excellent washing performance make the Electrolux product range the ideal choice for residential buildings.



## Dry Cleaners

The Electrolux Lagoon™ system is the only wet-cleaning process in the world for delicate garments approved by The Woolmark Company.



## Commercial Laundries

Commercial laundries need to be competitive. That is why our large industrial machines are designed to deliver you excellent results with high energy and cost efficiency.

A woman with long dark hair, wearing a white long-sleeved top and white pants, is sitting in a lotus position with her eyes closed, meditating. The background is a sunset or sunrise over a body of water, with a purple and orange sky. A faint, large, light-colored geometric shape, resembling a stylized 'X' or a double triangle, is overlaid on the image, centered behind the woman. The word 'Economy' is written in white, sans-serif font at the top, 'Performance' is written in white, sans-serif font at the bottom left, and 'Time' is written in white, sans-serif font at the bottom right.

# Economy

Performance

Time

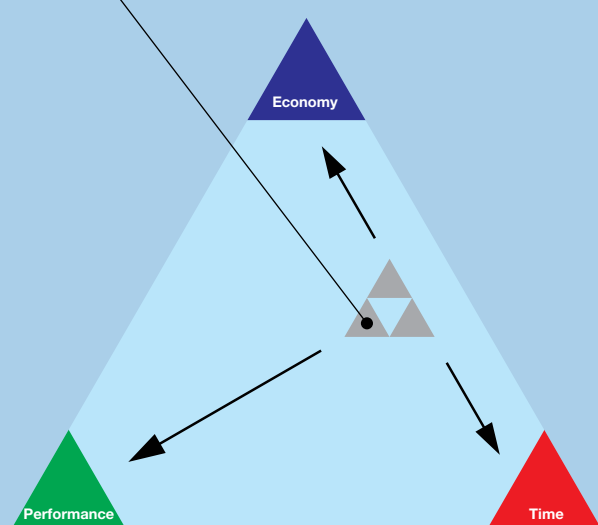
# Economy, performance, time: the perfect balance

With Compass Control® you can choose the program set-up that suits you best. Finding the perfect balance between low water and energy consumption, whilst maximising wash results with shorter processing time.



## Economy, Performance, Time

All our machines come with the full range of wash cycles and programs in the Electrolux wash program library. You choose the configuration of the machine – with all programs or your desired selection.



## Compass Control®

- Compass Control® machines offer wash program libraries with our “Wash Triangle” technology for general In-house laundry needs (hospital, boarding schools, marine installations etc). Configure the machine to suit your needs: Using “Economy” programs help to reduce your running costs. Alternatively should your needs change you can reconfigure your machine from the library using “Performance” or “Time”
- Compass Control® machines offer wash programs developed to specifically suit your needs (healthcare, restaurants, laundrettes, leisure, indoor cleaning etc.)
- Assign your most frequently used programs to our Quick start button function

60°C (140 °F) programs, without pre-wash	Compass Control® washer			Traditional washer
	Economy **	Performance	Time	
Wash result *	3	<b>5</b>	4	3 to 5
Rinse result *	4	<b>5</b>	4	2 to 4
Water consumption - ltr/kg load	<b>7,9</b>	14	10	9 to 14
Energy consumption - kWh/kg load	<b>0,16</b>	0,2	0,17	0,17 - 0,22
Program time - minutes	47	63	<b>43</b>	46 - 55

\* Wash and rinse result measured on a scale 1 to 5, where “5” is best (The Swedish Consumer Agency standards)

\*\* Economy is default setting. Time and Performance wash programs can be configured on site.

# All round perfection

W465H



**Your daily operations made easier**

- Reduced maintenance requirements
- Improved maintenance thanks to fewer parts
- Reduced noise and vibrations

## W4400H



Our heavy-duty washer extractor range includes W4400H, W4600H, W485H and W41100H - All specifically designed for commercial laundries and larger scale In-house laundry installations.

### Main features:

- High extraction force for efficient dewatering
- Clarus Control® fully programmable microprocessor
- SuperBalance™ that guarantees the correct extraction force with less vibration
- Frequency controlled motor for flexible drum actions
- Large door opening for easy loading/unloading
- Prepared for 13 liquid detergent supply signals
- 8 liquid supply connections
- Stainless steel front panels
- Direct steam for faster heating process (all)  
Electrical heating (W4400H and W4600H)

### Options:

- Forward tilting or forward/backward tilting for easier loading/unloading
- Front-mounted loading hopper for manual operation (W4400H)
- Hands-off system – fully automatic loading/unloading (W4850 and W41100H)
- Additional noise insulation panels < 70 dB (A)
- Dual drain valves in re-use systems for optimum water savings



# All round perfection

An insight into the origins of excellence. Whatever your needs, Electrolux offers a wide range of products offering the perfect solution for you. The range consists of 4 main categories: H (high spin), X (extra spin), M (medium spin) and N (normal spin).

**W465H**



Smooth rounded top panel makes cleaning easy



Flexible dosing for powder or liquid detergent



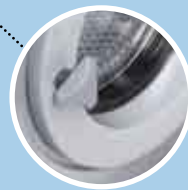
Easy-to-use Compass Control® with large display and language selection



Large opening for easy loading/unloading



Spray lifters speed-up the soak and wash process



New soft-grip door handle. Slip lock function – durable in any demanding environment



Embossed perforation in inner drum and high grade stainless steel in drum assembly



Industrial steel springs and shock absorbers for reliable and low-noise operation



Galvanised steel for maximum rust protection



SuperBalance™ always ensures the correct extraction force with lower vibration



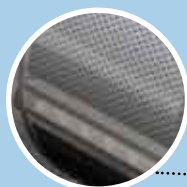
Flexible dosing for powder or liquid detergent



Smooth rounded top panel makes cleaning easy



Easy-to-use Compass Control® with large display and language selection



Embossed perforation in inner drum and high grade stainless steel in drum assembly



Large opening for easy loading/unloading



New soft-grip door handle. Slip lock function – durable in any demanding environment



Spray lifters - speed up the soak and wash process



SuperBalance™ always ensures the correct extraction force with lower vibration (not for N-range)



Galvanised steel for maximum rust protection

**W475M**



Range	Design type		G-force
	SOFT mount	SOLID mount	
H	•		300-425
X		•	220-300
M		•	140
N		•	81

### W4280X



The X-range models with solid frame include W4280X, W4350X and W4600X. Their compact and robust design makes them ideal for In-house laundries within the hospitality and care markets.

#### **Main features:**

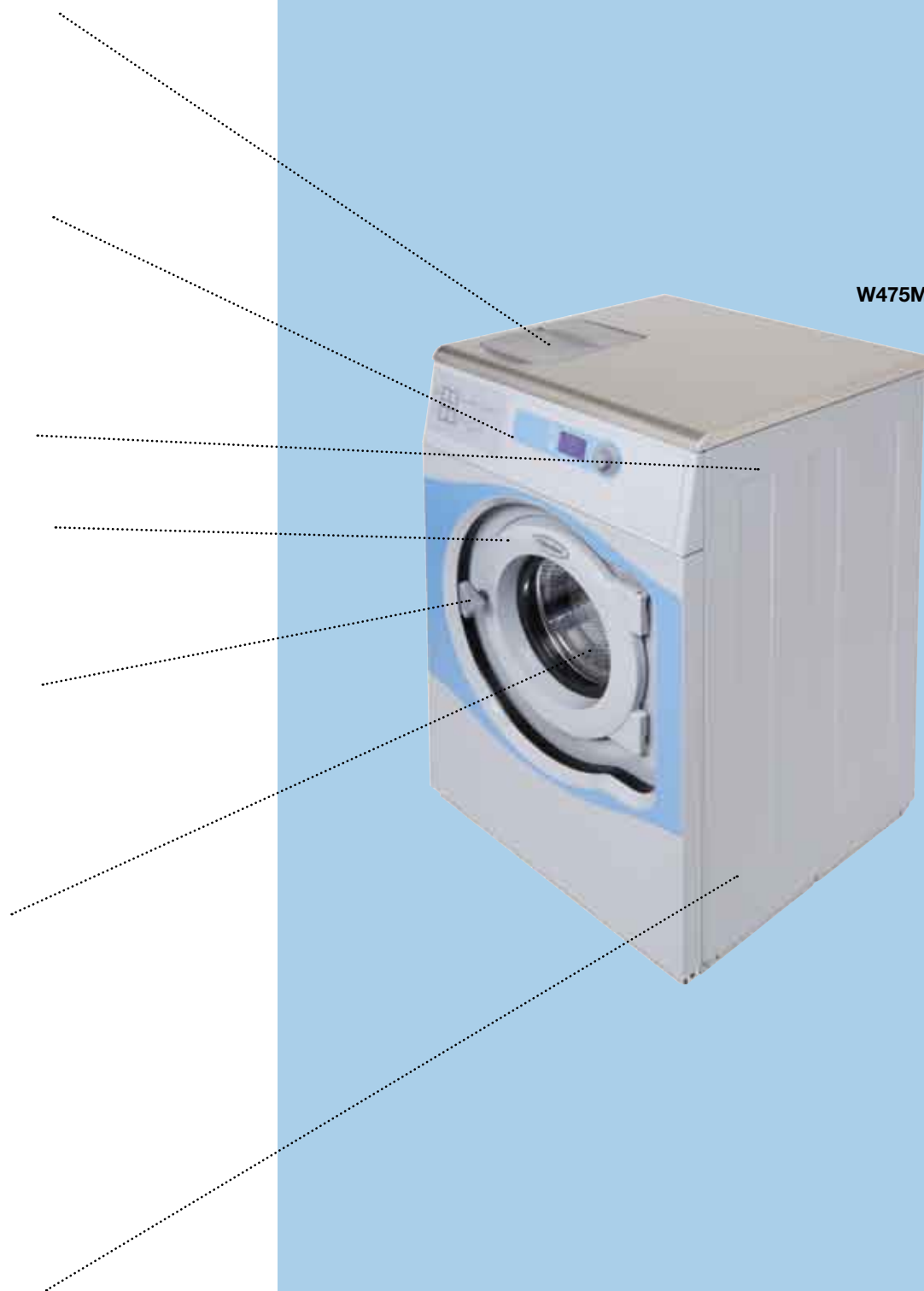
- Exacta Control® with fixed wash programs (not for W4600X)
- Clarus Control® fully programmable microprocessor
- SuperBalance™ guarantees the correct extraction force with lower vibration
- Frequency controlled motor for flexible drum actions such as extra gentle speed
- Large door opening for easy loading/unloading
- Prepared for manual or automatic detergent supply
- Stainless steel front panel
- Direct steam for faster heating process (all).  
Electrical (W4350X and W4600X)

#### **Options:**

- Five compartment supply injector (only W4600X)
- Stainless steel side panels



**W475M**



# Simply great results

Controls are a crucial part of any machine and the extremely easy to use controls in the Electrolux range of machines ensure that washing operations are simplified and perfectly smooth.

## Compass Control®

Compass Control® gives you enormous flexibility. It is the perfect solution for general needs in Apartment house laundries and In-house laundries with our Wash Triangle technology. Compass Control® also offers specific tailor-made wash programs for differing applications, i.e. healthcare, launderettes, indoor cleaning, quick service restaurants, etc.



### Quick start

Our quick start options allow you to preset 2 of your most frequently used programs.

### Easy reading

Easy to see icons make program identification simple.

### Search ease

The ergonomic knob makes program selection quick and simple.

### Compass Control®

- Multilingual
- Larger display
- Wash Triangle benefits
- Quick start buttons
- Multi-programmable

## Clarus Control®



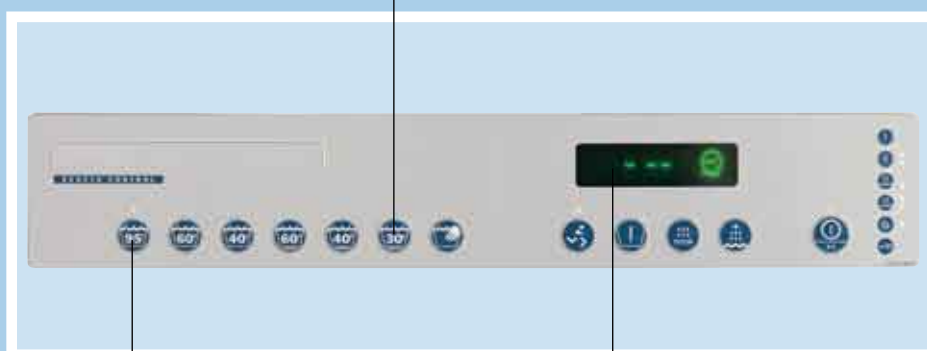
Clarus Control® monitors all machine functions: 9 standard and 192 customizable programs.

You can use the memory card to download new programs, which have been created on your PC or transfer programs quickly and easily from one machine to another. With our "Wash Program Manager" software package you can easily generate wash programs for Clarus and Compass controls on your PC.

Our Clarus Control® microprocessor perfectly combines timing, optimal water levels and temperature to ensure superior performance with minimum consumption.

## Exacta Control®

Designed to be easy: just select the program you want and press start.



It includes up to 28 different program combinations.

The display provides full information on current washing phases. A diagnostics program checks the machine's conditions.

## Classic Control

Easy to use control available in 2 versions launderette (5 wash programs) and In-house laundries (10 wash programs) for your total convenience.



Range	Control options			
	Clarus	Compass	Classic	Exacta
H	•	•		
X	•			•
M	•	•		
N		•	•	

Strength is  
excellence - even  
in the smallest detail



# Ergonomic, reliable, and high performing

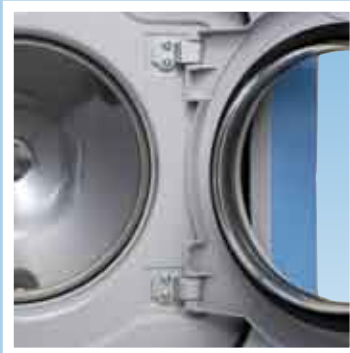
Electrolux have dedicated themselves to provide you with safe and worry free machines by taking care of every little detail.



## Designed for you

The new soft-grip door handle design fits your hand perfectly with a Slip-lock door handle - for safe and trouble free operation in any demanding environment. The handle simply turns around if someone tries to open during the wash cycle.

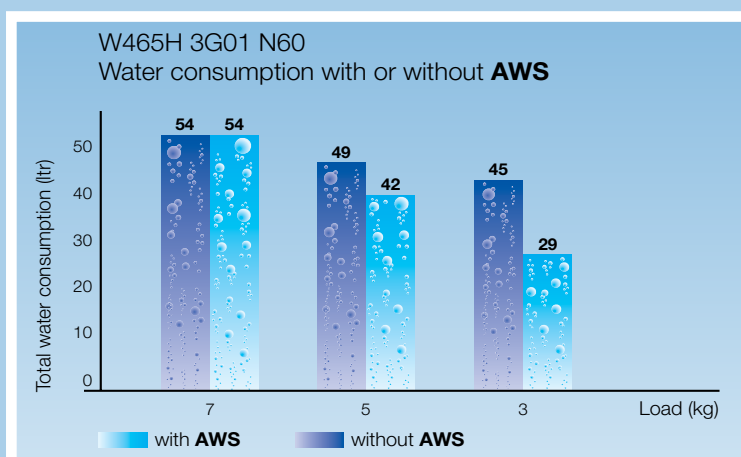
Designed to improve your grasp: large and clear display with icons and a single knob to operate. Could not be easier!



## Built to last

Parts subject to high strain are designed to be durable, guaranteeing cost-efficient management.

Riveted technology, taken from aeronautics, guarantees durable and rust-proof joints.



Example: 35% water savings at half load

## Automatic Weighing System (AWS)

Savings on utility costs, AWS is the automatic system that calculates the right amount of water based on load weight. With each wash cycle, AWS automatically determines the weight of the load and adds precisely the right amount of water resulting in reduced water consumption and energy costs. The AWS is a software program built into the wash cycle and is available on Compass Control® and Exacta Control®.

# Choose your solution

Helping you to choose a custom designed machine to perfectly meet your needs is a pleasure. Electrolux offers infinite function and option combinations to enhance your business and profitability.



Certus Management Information System™ (CMIS)



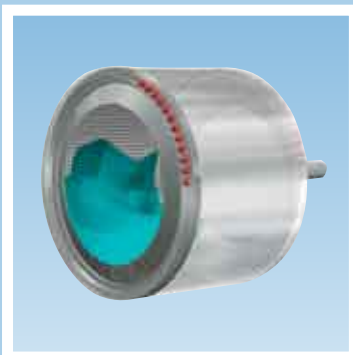
Integrated Weighing System™ (IWS)

## **Certus Management Information System™ (CMIS)**

Innovative software from Electrolux that allows you to connect machines to a network to monitor all operating costs and program & consumption data - validating every processed batch.

## **Integrated Weighing System™ (IWS)**

Load weight is conveniently displayed on the Clarus Control® panel. IWS helps ensure correct dosing of water and detergent.



Dynamic Balancing System™ (DBS)



Water re-use

## **Dynamic Balancing System™ (DBS)**

Eliminates noise and vibration.

## **Water re-use**

Many of our washers are available with dual drain valves to facilitate water saving solutions. Electrolux also offers re-use tank systems to recycle water, providing consistent savings.

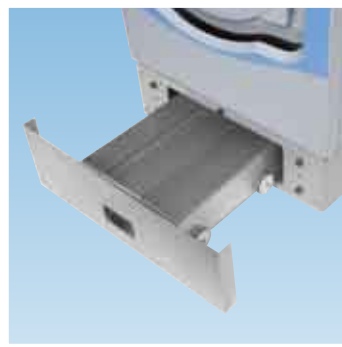


### Tilting System

Improves user ergonomics, taking the strain out of heavy loading and unloading.



Hands-Off System



Base - An ergonomic accessory

### Hands-Off System

Allows automatic loading. After washing, the machine tilts forward and transfers the load onto conveyor belts.

### Base - An ergonomic accessory

The stainless steel base makes loading easy. Bases are also available with fluff collectors to prevent clogging in the drain piping.



### Hydro extractors

The ideal complement to Normal spin washers. All hydro extractors are fully constructed in stainless steel, with 1450 rpm extraction speed ensuring a high de-watering capacity with minimal energy consumption.

### Electrolux Service

- Maintain appliances in excellent prime condition
- Prevent costly and untimely breakdowns
- Reduce stress and unexpected problems
- Retain the value of your investment for many years to come
- Reduce overall operating costs
- Fully qualified and trained Electrolux certified engineers





# Tailor your choice

## Legend

● Standard    ○ Option    - Not available



Model		W455H	W465H	W475H
Comments				
<b>Capacity</b>	Drum volume in litres	53	65	75
	Dry weight capacity Kg	5.5	7	8
	Dry weight capacity lbs	12	14	18
<b>Extraction</b>	Rpm	1300	1100	1100
	G-factor	425	350	350
<b>Dimensions</b>	Width (mm)	595	720	720
	Depth (mm)	680	690	690
	Height (mm)	850	1115	1115
	Width (in)	23-7/16"	28-6/16"	28-6/16"
	Depth (in)	26-12/16"	27-3/16"	27-3/16"
	Height (in)	33-7/16"	43-14/16"	43-14/16"
<b>Heating alternatives</b>				
	Non-heated	For hot water connection	○	○
	Electric		○	○
	Direct steam	-	○	○
<b>Consumption data: Normal 60 °C (140 °F) programme (without pre-wash, 3 rinses at rated capacity,</b>				
	Water	Litres cold and hot per load	52/9	43/11
	Electricity	kWh per load	0.55	0.45
	Time	Minutes	46	45
<b>Design features</b>				
<b>Front panel</b>	Painted	●	●	●
	Stainless steel	○	○	○
<b>Side panel</b>	Painted	●	●	●
	Stainless steel	Clarus Control® only	○	○
<b>Top panel</b>	Painted	-	-	-
	Stainless steel	●	●	●
<b>Functional Features</b>				
<b>Controls</b>	Compass Control® (programmable)	Coin-ops, smaller OPL's	●	●
	Clarus Control® (fully programmable)	OPL, Lagoon™, industrial	-	○
<b>Weighing system</b>	Automatic Weighing System (AWS)	Compass Control® only	●	●
	Integrated Weighing System™	Clarus Control® only	-	-
<b>Drain</b>	Water-operated drain valve	●	●	●
	Electrically operated drain valve	○	○	○
	Electric drain pump	○	○	○
<b>Water recovery system</b>	Dual drain valve and extra inlet	For water re-use	-	-
<b>Detergent supply</b>	Detergent box	Number of compartments	● 4	● 4
	Automatic liquid supply		○	○
<b>Water inlet</b>	Hot & cold water inlet valves		●	●
	Third water inlet valve		-	-
	Large inlet water valves (DN50/2")		-	-
	Spray nozzle in door for impregnation	Clarus Control® only	-	-
<b>Payment activation</b>	Coin meter/Chip card reader	Compass Control® only	○	○
<b>Motor</b>	Frequency-controlled motor		●	●
<b>Noise reduction</b>	Extra noise insulating panels	Reduces noise	-	-
	Dynamic Balancing System™ (DBS)	Reduces noise and vibration	-	-
<b>Operation monitoring</b>	Water test and level tube		-	-
	External communication cable		-	-
<b>Loading systems</b>	Tilting forward		-	-
	Tilting forward and backward		-	-
	Front-mounted loading hopper		-	-





	W4105H	W4130H	W4180H	W4240H	W4300H	W4400H	W4600H	W4850H	W41100H
	105	130	180	240	300	400	600	850	1100
	11	14	20	27	33	45	65	90	120
	25	30	40	55	66	90	135	200	250
	1025	980	930	890	820	825	800	720	663
	350	350	350	350	300	350	350	350	300
	830	910	970	1020	1020	1330	1390	1640	1640
	705	785	870	915	1060	1360	1600	1630	1845
	1200	1325	1410	1440	1445	1890	2015	2230	2230
	32-11/16"	35-13/16"	38-3/16"	44-2/16"	44-2/16"	52-6/16"	54-12/16"	64-9/16"	64-9/16"
	27-12/16"	30-14/16"	34-4/16"	36"	65-6/16"	53-9/16"	63"	64-3/16"	72-10/16"
	47-4/16"	52-3/16"	55-8/16"	56-11/16"	56-14/16"	74-7/16"	79-5/16"	87-13/16"	87-13/16"
	○	○	○	○	○	○	○	○	○
	○	○	○	○	○	○	○	-	-
	○	○	○	○	○	○	○	●	●

**electrical heating)**

	68/18	86/22	124/31	167/42	202/52	programmable	programmable	programmable	programmable
	0.7	0.85	1.3	1.7	1.9	programmable	programmable	programmable	programmable
	46	47	45	46	48	programmable	programmable	programmable	programmable
	●	-	-	-	-	-	-	-	-
	○	●	●	●	●	●	●	●	●
	●	●	●	●	●	●	●	●	●
	○	○	○	○	○	○	○	○	○
	-	-	-	-	-	●	●	●	●
	●	●	●	●	●	-	-	-	-
	●	●	●	●	●	-	-	-	-
	○	○	○	○	○	●	●	●	●
	●	●	●	●	●	-	-	-	-
	-	○	○	○	○	○	○	○	○
	●	●	●	●	●	compressed air	compressed air	compressed air	compressed air
	○	○	○	○	○	compressed air	compressed air	compressed air	compressed air
	○	-	-	-	-	-	-	-	-
	-	○	○	○	○	○	○	○	○
	● 4	● 4	● 4	● 4	● 4	○ 5	○ 5	○ 5	○ 5
	○	○	○	○	○	●	●	●	●
	●	●	●	●	●	●	●	●	●
	-	○	○	○	○	○	○	○	○
	-	-	-	-	-	-	○	○	○
	-	○	○	○	○	○	-	-	-
	○	○	○	○	○	-	-	-	-
	●	●	●	●	●	●	●	●	●
	-	-	-	-	-	○	○	○	○
	-	○	○	-	-	-	-	-	-
	-	○	○	○	○	○	○	○	○
	-	-	-	-	-	○	○	○	○
	-	-	-	-	-	○	○	○	○
	-	-	-	-	-	○	-	see page 19	see page 19
	-	-	-	-	-	manual	-	see page 19	see page 19

## Legend

- Standard
  - Option
  - Not available
- |                      |                      |
|----------------------|----------------------|
| <b>N</b> Normal-spin | G-factor 81          |
| <b>M</b> Medium-spin | G-factor 140         |
| <b>X</b> Extra-spin  | G-factor 220 and 300 |



Model		W475		W485		
		N	M	N	M	
Capacity	Drum volume in litres	75	75	85	85	
	Dry weight capacity Kg	8	8	9	9	
	Dry weight capacity lbs	18	18	20	20	
Extraction	Rpm	528	694	528	694	
	G-factor	81	140	81	140	
Dimensions	Width (mm)	660	660	660	660	
	Depth (mm)	690	690	730	730	
	Height (mm)	1115	1115	1115	1115	
	Width (in)	26"	26"	26"	26"	
	Depth (in)	27-3/16"	27-3/16"	28-12/16"	28-12/16"	
	Height (in)	43-14/16"	43-14/16"	43-14/16"	43-14/16"	
Heating alternatives						
	Non-heated	For hot water connection	○	○	○	○
	Electric		○	○	○	○
	Direct steam		○	○	○	○
Consumption data: Normal 60 °C (140 °F) programme (without pre-wash, 3 rinses at rated capacity,						
	Water	Litres cold and hot per load	54/14		55/15	
	Electricity	kWh per load	0.5		0.5	
	Time	Minutes per load	46		46	
Design features						
Front panel	Painted		●	●	●	●
	Stainless steel		○	○	○	○
Side panel	Painted		●	●	●	●
	Stainless steel	Clarus Control® only	○	○	○	○
Top panel	Stainless steel		●	●	●	●
Drum	Large perforation, inner drum	Hygiene, sluice function	○	○	-	-
Functional Feature						
Controls	Classic Control (non-programmable)		●	-	●	-
	Compass Control® (programmable)	Coin-ops, smaller OPL's	○	●	○	●
	Exacta Control® (semi-programmable)	Coin-ops, smaller OPL's	-	-	-	-
	Clarus Control® (fully programmable)	OPL, industrial	-	○	-	○
Drain	Water-operated drain valve		●	●	●	●
	Electrically operated drain valve		○	○	○	○
	Electric drain pump		○	○	○	○
Water recovery system	Dual drain valve	For water re-use	-	-	-	-
Detergent supply	Detergent box	Number of compartments	●4	●4	●4	●4
	Automatic liquid supply		○	○	○	○
Water inlet	Hot & cold water inlet valves		●	●	●	●
	Third water inlet valve		-	-	-	-
Payment activation	Coin meter	Classic and Compass controls	○	○	○	○
	Chipcard reader (Single System)	Compass Control®	○	○	○	○
Motor	Frequency-controlled motor		●	●	●	●



W4105		W4130		W4180		W4250		W4330		W3280X	W3350X	W3600X
N	M	N	M	N	M	N	M	N	M	X	X	X
105	105	130	130	180	180	250	250	330	330	280	350	600
11	11	14	14	20	20	28	28	35	35	28	35	60
25	25	30	30	40	40	55	55	75	75	65	80	135
494	649	494	649	471	619	446	587	428	561	805	650	630
81	140	81	140	81	140	81	140	81	140	300	220	220
720	720	720	720	750	750	830	830	910	910	935	1085	1145
705	705	790	790	880	880	955	955	1040	1040	970	1105	1375
1200	1200	1200	1200	1325	1325	1410	1410	1445	1445	1455	1570	1670
28-6/16"	28-6/16"	28-6/16"	28-6/16"	29-8/16"	29-8/16"	32-11/16"	32-11/16"	35-13/16"	35-13/16"	36-13/16"	42-11/16"	45-1/16"
27-12/16"	27-12/16"	31-2/16"	31-2/16"	34-10/16"	34-10/16"	37-10/16"	37-10/16"	40-15/16"	40-15/16"	38-3/16"	43-8/16"	54-2/16"
47-4/16"	47-4/16"	47-4/16"	47-4/16"	52-3/16"	52-3/16"	55-8/16"	55-8/16"	56-14/16"	56-14/16"	56-14/16"	61-13/16"	65-12/16"
○	○	○	○	○	○	○	○	○	○	○	○	○
○	○	○	○	○	○	○	○	○	○	-	○	○
○	○	○	○	○	○	○	○	○	○	○	○	○

**electrical heating and a with Compass Control®)**

	72/20	93/25	134/35	183/47	234/62	312/0	320/67	598/105
	0.65	0.8	1.15	1.55	2	0.7	4.5	7.5
	47	49	50	48	50	45	49	45
	●	●	●	●	●	-	-	-
	○	○	○	○	○	●	●	●
	●	●	●	●	●	●	●	●
	○	○	○	○	○	○	○	○
	●	●	●	●	●	-	-	-
	○	-	-	○	-	-	-	-
	●	-	●	-	●	-	-	-
	○	●	○	●	○	●	-	-
	-	-	-	-	-	●	●	-
	-	○	-	○	-	○	○	●
	●	●	●	●	●	-	-	-
	○	○	○	○	○	●	●	●
	○	○	-	-	-	-	-	-
	-	-	○	○	○	○	○	○
	●4	●4	●4	●4	●4	●4	●4	○5
	○	○	○	○	○	●	●	●
	●	●	●	●	●	●	●	●
	-	-	○	○	○	○	○	○
	○	○	○	○	○	●	●	-
	○	○	○	○	○	-	-	-
	●	●	●	●	●	●	●	●

Share more of our thinking at [www.electrolux.com](http://www.electrolux.com)

### Environment

Being environmentally friendly is more than just a concern to us. It means being truly conscious and totally committed to environmental issues at every stage of the industrial cycle, from design to manufacturing. The ISO 14001 certification guarantees our long-term commitment.